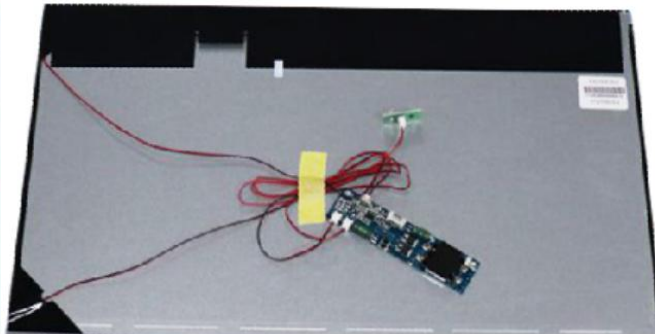


TDD-TD-185H

18.5" High Brightness TFT Displays



Overview

Designed especially for outdoor application, the **TDD High Brightness TFT Displays** include **10.1 to 86 inch, Open Frame, Optical Bonding, Solar Powered, Bar Type, Full Array Local Dimming, Ultra & Custom High Brightness Displays** types, ensuring excellent visibility in direct sunlight. Custom backlight solution & advanced brightness sensor allow for automatic adjustments based on ambient light, optimizing readability and energy efficiency, ensuring the clear visibility at all times and extending the lifespan of the displays – making it the ideal solution for the bright environments.

Features

- 1000 up to 2500 nits, Sunlight Readable, Wide Operating Temperature
- 24/7 IPS Panel with Industrial Grade LED Backlights (analog / PWM Dimming Control)
- Available in Kits Form, Open Frame, Waterproof Optical Bonding Tempered Glass and Fully Custom Design

Specifications

Panel

LCD Type	TFT / IPS / Transmissive / Normally Black
Diagonal Size	18.5"(16:9), 46.99cm, Active matrix TFT LCD (WLED)
Active Area (mm)	408.96 mm x 230.04 mm
Pixel Pitch (H x V)	0.213 x 0.213 mm
Resolution	1920 x 1080
Viewing Angle	Horizontal: 89° or 178° total / Vertical: 89° or 178° (Typ.)(CR≥10)
Number of Colors	16.7 million
Brightness (typical)	1000 nits
Response Time-total	14 (Typ.)(Tr+Td) ms
Contrast Ratio	1000:1
Input Video Frequency	Horizontal: 30 - 60 KHz / Vertical: 50 - 75 Hz
Interface	LVDS 30 pins
Supply Voltage	5V (Typ.)

PCAP Touch Panel **None**

LCD Controller (A/D) Board

Video Interfaces	Default: 1*VGA, 1*HDMI for 1K, 2*HDMI for 4K; Optional: DVI x1, Display Port x1
Connectors & Controls	Audio Mini jack x1 / DC x1; 5 OSD buttons(optional)
Power	Supply / Consumption: 100-240 VAC / 12VDC +/- 5%; 19.2W typical, 1.2W sleep, 0.5W off
Mechanical	Outline Dimensions(WxHxD): 430.4x254.6x12.5mm/Weight (Unpacked/Packed): 1.5/N/A kg Box Dimensions: N/A / Mounting: Kits Form
Environmental	Operating / Storage Temperature: -10 to 50°C or -20 to 70°C / -20 to 60°C or -30 to 80°C
Accessories	LCD controller & constant current boards, power supply, ambient light sensor & panel cable

Others

MTBF / Warranty / Ready for Use: 50,000 hours demonstrated / 1-year / 24/7

* TDD (www.tddtouch.com, sales@tddtouch.com) reserves the right to change specifications without prior notice.